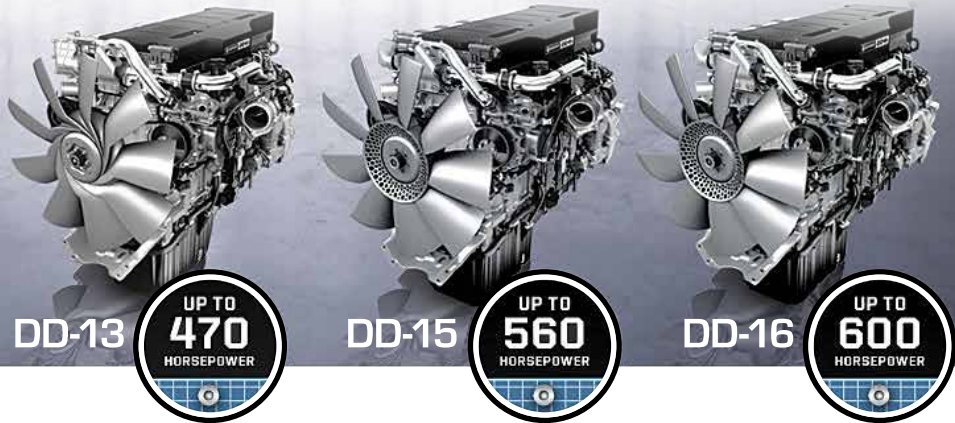


Lonestar Truck Group  
InGear Newsletter  
Promoting Trucking with Value  
August 2012



**DETROIT POWER — Best in Class Fuel Economy!**



**LONESTAR**  
TRUCK GROUP



Lonestar Truck Group is Your One-Stop Source for

# TRUCK & TRAILER SALES, PARTS & SERVICE



**DETROIT**<sup>TM</sup>  
DEMAND PERFORMANCE<sup>SM</sup>

*The Detroit Diesel family of engines are built on a platform designed for "The best in Class Fuel Economy." Best in Class Horse Power. Best in Class Torque. Best In Class Emissions. Best in Class Dependability.*

The DD Family of engines were first introduced in 2007, since then it has set the standard for all other Diesel engines. The DD Platform from the beginning was designed to meet the stringent EPA Guidelines, so it is no surprise that the Detroit Diesel is already certified for 2014 emissions. One of Detroit Diesel's competitors has yet to meet the 2010 or 2012 emissions requirements.

### Engine Availability

FREIGHTLINER	DD13	DD15	DD16
Cascadia	X	X	X
Coronado	X	X	X
M2 112	X		
114SD	X		
Coronado SD	X	X	X
WESTERN STAR	DD13	DD15	DD16
4700	X		
4800	X		
4900	X	X	X
6900	X	X	X

You can have confidence that the Detroit Diesel family of engines will stay compliant with all regulations and at the same time will be the industry leader in cost of ownership. Detroit power will give you the competitive edge to help make your company profitable.

The DD15 is standard with a single turbocharger that adds back into the engine's flywheel, 50 FREE Horse Power, by harnessing the spent exhaust gas and turning it into FREE Horse Power.

The Best in Class Choice for truck power is the Detroit Diesel. Because of the forward planning of Detroit Diesel, you can standardize on one family of engines for all your trucking needs, **Detroit!**



# AUGUST 2012 PARTS SPECIALS

PICTURES ARE FOR REFERENCE ONLY.  
ACTUAL PARTS MAY VARY. PRICES  
GOOD THRU AUG. 31, 2012



## CASCADIA LOGO FLOOR MATS

**PDT-CASCFM**

**\$39.95 set**



## Stainless Steel 1/4 QUARTER FENDER SET

**031-01070**

**\$99.95 set**



## KIDDE FIRE EXTINGUISHER 3-A:10-B:C

**KFE-466425**  
**\$37.95 each**



## PENCOOL 3000 Advanced Cooling System Treatment

**PIC-300016**  
**\$4.95 each**



## Aluminum MANIFEST BOX

Protect important  
documents and  
current records.

**022-01087**  
**\$6.95 each**



## KIDDE FIRE EXTINGUISHER 10-B: C

**KFE-440161**  
**\$17.95 each**



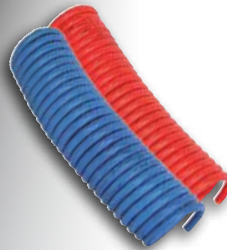
## DIESEL EXHAUST FLUID

**BTG-544948**  
**\$11.95 each**



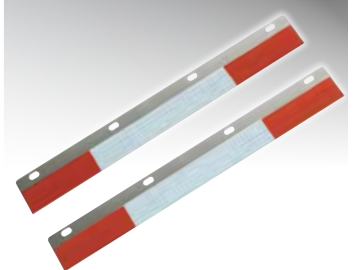
## Alliance COIL AIR KIT 15' Red/Blue

**ABP-N42AAC15**  
**\$34.95 set**



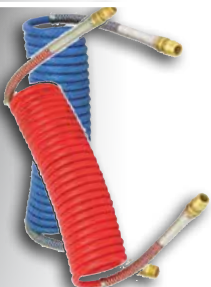
## Alliance Replacement

15' - Air Hose Only  
Red or Blue  
**ABP-N42AAC15R/B**  
**\$19.95 each**



## CONSPICUITY STRIPS Reflective Tape on Aluminum

**BTS-RT25**  
**\$15.95 set**



**Alliance  
Coil Air Kit**  
15' Air Hose Only  
Red or Blue w/40" lead  
**ABP-N42AAC154**  
**\$46.95 set**



**Alliance  
Replacement**  
15' Air Hose Only  
Red or Blue w/40" lead  
**ABP-N42AAC154R/B**  
**\$24.95 each**





**In Stock at all Lonestar Locations**  
**CLUTCH SPECIALS**

<b>SP-208925-82</b>	<b>NEW ADVANTAGE CLUTCH</b> Manual Adjust - 7 Spring - 4 Paddle, 1700 Lbs Torque, 3 Zerk Ports	<b>\$629.95 ea</b>
<b>SP-108935-82 MO</b>	<b>REMAN - EASY PEDDLE CLUTCH</b> With New Intermediate Plate	<b>529.95 ea</b>
<b>SP-208925-20</b>	<b>NEW ADVANTAGE CLUTCH</b> 6 Paddle, 1860 Lbs Torque, 3 Zerk Ports, Vibration Control Technology	<b>729.95 ea</b>
<b>SP-107237-10</b>	<b>NEW MEDIUM DUTY CLUTCH</b> 860 Lbs Torque Rating, Manual Adjustment	<b>469.95 ea</b>

**All Clutches in Stock**  
**New Advantage Clutches Have a Two Year Warranty**

PARTS PICTURES ARE FOR REFERENCE ONLY. ACTUAL PARTS MAY VARY. PRICES GOOD THROUGH AUGUST 31, 2012

**Don't get caught with a bad clutch in a bad place.**

**LONESTAR LABOR SPECIAL**

**Clutch Adjustment**  
**\$45.00**

- **Come in for a clutch adjustment or a replacement if needed.**
- **A clutch replacement estimate for your truck is available at time of service.**
- **We service and replace all makes.**

If repairs are necessary, parts and labor will be at additional cost. Offer good through August 31, 2012



**[www.LonestarTruckGroup.com](http://www.LonestarTruckGroup.com)**

# LONESTAR TRUCK GROUP



■ **CORLEY-WETSEL**  
**FREIGHTLINER - WESTERN STAR**  
 ABILENE, TX 1-800-535-0826

■ **ALBUQUERQUE**  
**FREIGHTLINER - WESTERN STAR**  
 ALBUQUERQUE, NM 1-800-535-6470

■ **BRYAN**  
**FREIGHTLINER - WESTERN STAR**  
 BRYAN, TX 1-866-727-9222

■ **FARMINGTON**  
**FREIGHTLINER WESTERN STAR**  
 FARMINGTON, NM 1-800-535-9031

■ **CORLEY**  
**FREIGHTLINER - WESTERN STAR**  
 SAN ANGELO, TX 1-800-901-9973

■ **SHREVEPORT TRUCK CENTER**  
 SHREVEPORT, LA 1-877-700-9955

■ **TEMPLE**  
**FREIGHTLINER - WESTERN STAR**  
 TEMPLE, TX 1-800-903-6177

■ **TEXARKANA TRUCK CENTER**  
 TEXARKANA, TX 1-866-940-8444

■ **TYLER TRUCK CENTER**  
 TYLER, TX 1-877-600-2575

■ **WACO**  
**FREIGHTLINER - WESTERN STAR**  
 WACO, TX 1-888-700-9735

■ **WICHITA FALLS**  
**FREIGHTLINER - WESTERN STAR**  
 WICHITA FALLS, TX 1-800-903-0322

## IS YOUR ENGINE READY FOR A TUNE UP OR RUNNING POORLY?



### Our Factory Trained Technicians Can Perform This For You!

- Check Engine & Truck diagnostic codes
- Check air intake system
- Inspect for air filter restriction
- Coolant test
- Set intake and exhaust valve lash
- Set injector height to specification

\*If Engine is equipped with Jake brakes - Additional \$85.00

Call any Lonestar location.

*You drive... Leave the service to us.*



# Lonestar Truck Group

# MANAGERS' SPECIALS



**2009 Western Star 4900EX**, DDC 14.0 Detroit Engine 515 hp; Diesel; 10 Spd OD; Engine Brake; TufTrac Suspension; 3.91 Ratio; 24.5 Tires; All Aluminum Wheels; 225 in Wheelbase, 150,000 Miles. (9PAF2635-ABL-1) **\$92,500**



**2008 International Prostar**, (Qty 2) Mid Roof Sleeper; ISX Cummins Engine 485 hp; Diesel; 498,563 mi; 13 Spd OD; Eng. Brake; Air Ride; 3.55 Ratio; 22.5 Tires; Alum Wheels; 12,000 lb Front Axle Wt; 40,000 lb Rear Axle Wt, 498,563 Miles. (8C538659-ABQ-1) **\$64,900 \$49,975**



**2007 Freightliner Columbia 120**, 70 in Mid Roof XT Sleeper; 4000 Mercedes 450 hp; 10 Spd OD; Engine Brake; Air Ride; 3.58 Ratio; LP 24.5 Tires; Aluminum/Steel Wheels; 230 in Wheelbase; Tandem Axle, 684,000 Miles. (7LY58084-BRY-1) **\$34,950**



**2012 Freightliner 114SD**, Detroit DD13, 450 HP, 10 Spd Transmission, TufTrac Suspension, 4.30 Ratio, 220" Wheelbase, Aluminum Front Wheels, Steel Rear Wheels, 24.5 Tires. **New.** (CHBT4798-FAR-1) **\$118,200 Includes FET**



**2008 ETNY Low Boy**. 51' x 102", 22.5 LP Tires, 50 Ton Detach. Pony Motor, 25' in the Well and Rear Axle Lift. Good Rubber, and All New Brake Shoes, Drums and S-Cams. (8E111240-SAN-TRL-1) **\$51,500 \$49,867**



**2005 Freightliner CL12042ST Columbia 120**, 70 in Mid Roof Sleeper; MBE4000 Mercedes Engine 450 hp; Diesel; 13 Spd OD; Engine Brake; Air Ride; 3.58 Ratio; 22.5 LP Tires; All Aluminum Wheels; 215 in Wheelbase; Tandem Axle, 788,410 Miles. (5LV02488-SHV-1) **\$29,500**



**2006 Freightliner CL12064 Columbia 120**, 70 in Mid Roof XT Sleeper; 14.0 Detroit 515 hp; 10 Spd OD; Engine Brake; Air Ride; 3.58 Ratio; LP 22.5 Tires; Aluminum Wheels; 230 in WB; 630,000 Miles. (6LW57999-TEM-1) **\$39,900 \$39,500**



**2007 Freightliner Classic**, Mercedes MBE4000, 10 Spd, 3.58 Ratio, Air Ride Suspension, 195" Wheelbase, 553,514 Miles. (7DX33770-TXK-1) **\$35,000**



**2007 Freightliner Coronado 132**, 70 in Hi Rise Sleeper; S60 Detroit 515 hp; ; 13 Spd OD; Engine Brake; Air Ride; 3.58 Ratio; 22.5 Tires; All Aluminum Wheels; 265 in Wheelbase; Tandem Axle, 825,760 Miles. (7PY20704-TYL-1) **\$43,800 \$39,500**



**2007 Freightliner C12064ST Century 120**, 70 in Raised Roof Condo; 14.0 Detroit; Diesel; 10 Spd OD; Engine Brake; Air Ride; 3.58 Ratio; LP 22.5 Tires; Alum/Steel Wheels; 230" WB; 555,000 Miles. (7PV80063-WAC-1) **\$41,000**



**2007 Freightliner Columbia 120**, 70 in Raised Roof Condo; Detroit Engine 490 hp; 10 Spd OD; Engine Brake; Air Ride; 3.42 Ratio; 24.5LP Tires; All Aluminum Wheels; 235" Wheelbase; 620,000 Miles. (7LW76277-WF-1) **\$45,900 \$42,900**



**2012 Manac Light Weight End Dump**, Spring Susp; 26 ft Length; Frameless; 11r24.5 Tires; Steel Disc Wheels; Fixed Tandem Axle; Steel Composition; 26' Light Wt End Dump. 44,000 Single Point Susp 11r24.5 Tires. -0- Down WAC. **New.** (CP014315-SHV-TRL-1A) **\$26,100**



# Lonestar Truck Group is your place for quality used trucks.



**2008 Peterbilt 388**, C13 Caterpillar Engine 470 hp; Diesel; 18 Spd OD; Engine Brake; Air Ride Suspension; 3.70 Ratio; 24.5 Tires; All Aluminum Wheels; 225 in Wheelbase, 267,000 Miles. (8D735968-ABL-2) **\$69,500**



**2008 Kenworth T800**, ISX Cummins Engine 450 hp; Diesel; 10 Spd OD; Engine Brake; Air Ride; 3.55 Ratio; 22.5 LP Tires; All Aluminum Wheels; 173" WB; 6 Months 50K NTP Engine Warranty, 610,000 Miles. (8J235232-ABL-3) **\$52,500**



**2006 Dodge Sprinter 3500** Box Van, Standard Cab; 5 cyl diesel Mercedes; Diesel; 5 Spd OD; Spring Susp; Swing Door; 16 Tires; Steel Wheels; 144 in WB; Single Axle; New Trans, new brakes!; 4x2; 189,610 Miles. (65933715-ABQ-2) **\$14,950**



**2011 Freightliner M2 106**, Standard Cab; ISB Cummins 220 hp; 6 mi; 5 Spd; Spring Susp; 5.13 Ratio; 22.5 Tires; Steel Wheels; 254" WB; Single Ax; 18,000 lb Rear Ax Wt; 8,000 lb Front Axle Wt, **New**. (BDAZ7404-ABQ-3) ~~\$59,900~~ **\$51,925**



**2008 Freightliner FLD 13264T Classic XL**, 70 in Mid Roof Sleeper; DDC 14.0 Detroit 490 hp; Diesel; 10 Spd OD; Engine Brake; Air Ride; 3.58 Ratio; 22.5 LP Tires; Aluminum Wheels; 259 in WB; Tandem Axle, 560,000 Miles (8DY42049-BRY-2)



**2005 Freightliner Business Class M2 106** Crew Cab, Mercedes Engine 330 hp; Diesel Fuel Type; Automatic OD; Air Ride Suspension; 22.5 Tires; Aluminum Wheels; Single Axle, 129,000 Miles. (5HN61296-BRY-3)



**2012 Western Star 4900SB**, Cummins ISX, 485 HP, 18 Spd Transmission, TufTrac Suspension, 4.30 Ratio, 227" Wheelbase, All Aluminum Wheels, 24.5 Tires. **New**. (CDPBW7373-FAR-2)



**2012 Western Star 4900**, (Qty: 2) Standard Cab; DD13 Detroit Engine 450 hp; Diesel; 8LL; Engine Brake; TufTrac; 4.30 Ratio; 24.5 Tires; Aluminum/Steel Wheels; 227 in Wheelbase; Tandem Axle, **New** (CPBM2894-FAR-3)



**2005-06-07 Freightliner 2-ton** trucks w/warnty. new winch gang beds w/ 2-way Air PTO's, 20k winches, rolling tailboards, HD oil-field bumpers, winch driven pipe threaders, junkboxes, gin poles. We rig 6-8 of these a mo. Finance avail. Call Rich Jumper 325-651-9275 (GangTrucks-SAN-2)



**2012 Jack County Vacuum Trailers**, Capacity: 5460 Gallons, Fixed Suspension, Tandem Axle, Steel Wheels, 11R24.5 Tires. (C1364776-SAN-TRL-3)



**2007 Sterling LT9500**, Mercedes MBE4000, 10 Spd, 4.11 Ratio, Exhaust Brake, Air Ride Suspension, 204" Wheel Base, 24.5 Tires, Aluminum Front Wheels, Steel Rear Wheels, 455,410 Miles. (7AX44116-SHV-2) **\$42,500**



**2007 Freightliner CL12042ST Columbia** 120, 70 in Mid Roof XT Sleeper; DDC 14.0 Detroit 455 hp; 10 Spd OD; Engine Brake; Air Ride; 3.58 Ratio; 22.5 Tires; Aluminum Outsiders; 230 in WB, 532,321 Miles. (7LX08966-SHV-3) **\$39,500**

See a complete inventory of new and used trucks and trailers online at: [www.LonestarTruckGroup.com](http://www.LonestarTruckGroup.com)



# Many models & colors to choose from.



**2013 Western Star 4900FA**, ISX Cummins Engine 450 hp; 10 Spd OD; Engine Brake; Air Ride Suspension; 3.70 Ratio; 11R 24.5 Tires; Aluminum/Steel Wheels; 215 in Wheelbase; Tandem Axle. **New.** (DPBW8000-TEM-2)



**2003 Fontaine Drop Deck Trailer**, Air Ride; 48 ft Length x 102 in Width; 22.5 Tires; Aluminum/Steel Wheels; Spread Tandem Axle; Combination Comp; Drop Deck with headache rack, 10 winches, and tool box, good rubber. (35917718-TEM-TRL-3)



**2007 Volvo VN**, Raised Roof Sleeper, 465 HP, 10 Spd, Exhaust Brake, 230" Wheelbase, 22.5 LP Tires, Aluminum Front Wheels, Aluminum Outer Wheels, 615,240 Miles. (7N469704-TXK-2) **\$31,000**



**2010 Freightliner Cascadia**, Raised Roof Sleeper, Detroit DD15 - 455-475 HP, 10 Spd, 3.55 Ratio, Engine Brake, Air Ride, 238" WB, 22.5 LP Tires, Aluminum Outer Wheels, Warranty. 386,400 Miles. (ASAN4729-TXK-3) ~~\$79,500~~ **\$77,500**



**2012 Western Star 4900**, Detroit DD15, 505 HP, 10 Spd, 3.90 Ratio, Engine Brake, 230" Wheelbase Air Ride Suspension, 24.5 Tires, Aluminum Front Wheels, Steel Rear Wheels, Warranty. **New.** (CPBM9285-TYL-2)



**2007 Freightliner CL 120 Columbia**, 70 in Condo Sleeper; DDC 14.0 Detroit Engine 475 hp; Diesel; 10 Spd OD; Engine Brake; Air Ride; 3.58 Ratio; 22.5 LP Tires; All Aluminum Wheels; 230 in WB, 712,650 Miles. (7LW91638-TYL-3) **\$34,500**



**2008 Freightliner CL12064ST Columbia 120**, 70 in Mid Roof XT Sleeper; 14.0 Detroit Engine 515 hp; Diesel; 10 Spd OD; Engine Brake; Air Ride; 3.42 Ratio; LP 22.5 Tires; Aluminum Wheels; 230" WB, 593,000 Miles. (8LZ86155-WAC-2)



**2009 Freightliner CL12064ST Columbia 120**, DD 15 Detroit 475 hp; Diesel; 10 Spd OD; Engine Brake; Air Ride Suspension; 3.90 Ratio; 11 R 22.5 Tires; Aluminum/Steel Wheels; 210 in Wheelbase, 185,000 Miles. (9DAC9430-WAC-3)



**2006 Kenworth T660 72** in Premium High Roof; Caterpillar Engine 435 hp; Diesel; 13 Spd OD; Engine Brake; Air Ride; 3.58 Ratio; 22.5LP Tires; Aluminum Outside Wheels; 235 in Wheelbase; Tandem Axle, 680,000 Miles. (6J109047-WF-2)



**2007 Freightliner CST 12064 Century 120**, 70 in RR Condo; Detroit 455 HP; 10 Spd OD; Engine Brake; Air Ride Suspension; 3.58 Ratio; 22.5LP Tires; All Aluminum Wheels; 236 in Wheelbase; Tandem Axle, 598,000 Miles. (7LX03451-WFF-3)



**2012 Reitnauer Drop Deck**, Air Ride Susp; 48 ft Length x 102 in Width; Aluminum Floor; 22.5 Tires; Alum. Comp; 48x102 Drop Deck. Alum. wheels, Tool box, and LED lights. -0- Down Financing Available WAC. **New.** (CR026805-TYL-TRL-2b)



**2005 Fontaine Combo Flatbed**, (Qty: 3) Air Ride; Alum. Floor; 22.5 Tires; Steel Wheels; Spread Tandem Axle; Comb. Comp; 48x102 combo flatbed. Sliding winches, wide spread air ride, alum. floors. Fin. Avail WAC. (51530685-SHV-TRL-3c)

Lonestar Truck Group  
2051 Hughes Road  
Grapevine, TX 76051

PRESORT STANDARD  
U S POSTAGE  
PAID  
GLOBAL MAIL

RETURN SERVICE REQUESTED



FREIGHTLINER



WESTERN STAR

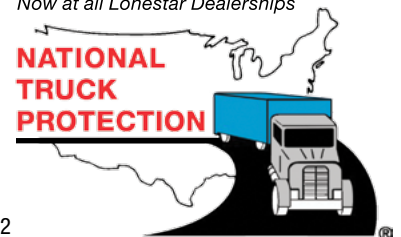


## TRUCK and TRAILER SALES, PARTS and SERVICE

www.LonestarTruckGroup.com / LS-1352 InGear Newsletter / ©Lonestar Truck Group, August 2012

Now at all Lonestar Dealerships

NATIONAL  
TRUCK  
PROTECTION



# Detroit Axles - Freightliner Trucks

## Ride On!

***Detroit Axles are machined and assembled in the same plant, in Detroit Michigan, that the Detroit diesel engine is built, with state of the art manufacturing. So quality, is the same as the Detroit Diesel Engines.***

■ Detroit Front Axles are the only heavy-duty truck axle to use Easy Steer needle bearings instead of bushings in the king pins. Needle bearings give a much longer life and a much smoother steering feel.

■ Detroit Rear Axles are designed with Topoid pinion placement, this means the drive line angles are much improved for a smoother flow of power to the rear wheels and improved universal joint life.

■ Detroit Rear Axle gears are precision machined so that "paired" ring gear and pinion is not necessary and gear sets will mesh perfectly.

■ Rear axles have a new and improved Input Seal for advanced sealing and leak protection.

■ Rear axles have full lubrication at all speeds, no need for expensive lube pumps.

■ Detroit Axles are backed by Detroit, a name you can trust!

■ Front axle weight ratings from 6,000# to 20,000 # with up to a 55 degree wheel cut.

■ Front axle rated for 12,500# for many applications, to reduce the need for a 13,000# axle.

■ Rear Axle weight ratings from 13,000# to 46,000#.

■ Detroit axles are backed by one of the largest parts and service networks in the industry.

### Detroit™ Front Steer Axles

Dependability on the Road



### Detroit™ Tandem Rear Axle

Reporting for Heavy Duty



### Detroit™ Single Rear Axles

Driven to Excellence



**DETROIT**  
DEMAND PERFORMANCE™