



**New
Year!**

**New
Truck!**



**LONESTAR
TRUCK GROUP**



inGear

**Your one-stop
source for
truck sales,
parts & service.**

It is the right time for you to buy new.

- Would you like a fuel mileage improvement of 1/2 mile per gallon?
- We want your trades.
- Used trucks prices are at their highest levels in years.
- Interest rates are at their lowest levels in years.
- Reduce your risk with extended warranties.
- Finance your Freightliner or Western Star trucks with Daimler Truck Finance, now located in their new home office in Texas. They know trucks and are only in business to support Freightliner and Western Star trucks.

Daimler Truck Financial

Financing that works for you.

Call any Lonestar dealer for 2011 Freightliner & Western Star trucks.

Call any Lonestar location.

You drive... Leave the service to us.



■ **CORLEY-WETSEL
FREIGHTLINER - WESTERN STAR
ABILENE, TX 1-800-535-0826**

■ **ALBUQUERQUE
FREIGHTLINER - WESTERN STAR
ALBUQUERQUE, NM 1-800-535-6470**

■ **BRYAN
FREIGHTLINER - WESTERN STAR
BRYAN, TX 1-866-727-9222**

■ **FARMINGTON
FREIGHTLINER WESTERN STAR
FARMINGTON, NM 1-800-535-9031**

■ **CORLEY
FREIGHTLINER - WESTERN STAR
SAN ANGELO, TX 1-800-901-9973**

■ **SHREVEPORT TRUCK CENTER
SHREVEPORT, LA 1-877-700-9955**

■ **TEMPLE
FREIGHTLINER - WESTERN STAR
TEMPLE, TX 1-800-903-6177**

■ **TEXARKANA TRUCK CENTER
TEXARKANA, TX 1-866-940-8444**

■ **TYLER TRUCK CENTER
TYLER, TX 1-877-600-2575**

■ **(NEW) WACO
FREIGHTLINER - WESTERN STAR
WACO, TX 1-888-700-9735**

■ **WICHITA FALLS
FREIGHTLINER - WESTERN STAR
WICHITA FALLS, TX 1-800-903-0322**



16 Point WINTERIZATION SPECIAL \$99.00

- ✓ CHECK HEATER & DEFROSTER OPERATION
- ✓ PRESSURE TEST COOLING SYSTEM FOR LEAKS
- ✓ CHECK AIR DRYER OPERATION (PURGE VALVE)
- ✓ CHECK AIR SYSTEM FOR MOISTURE
- ✓ CHECK WINDSHIELD WIPERS & OPERATION
- ✓ CHECK WINDSHIELD WASHER FLUID LEVEL
- ✓ LOAD-TEST BATTERIES
- ✓ CHECK BATTERY CONNECTIONS
- ✓ CHECK ALTERNATOR VOLTAGE
- ✓ CHECK THE COOLANT LEVEL
- ✓ CHECK THE ANTIFREEZE AND DCA
- ✓ CHECK ALL RADIATOR HOSES
- ✓ CHECK ALL BELTS
- ✓ CHECK THE HEATER HOSES
- ✓ CHECK THE CONDITION OF TIRES
- ✓ CHECK BRAKE OPERATION

Price good through January 31, 2011

SERVICE SATISFACTION... is standard equipment at Lonestar!

January 2011 PARTS SPECIALS



Stock Number	Description	\$ Price Each
031-01070	Stainless 1/4 Fender Set	99.95
031-01636	Black Plastic 1/4 Fender Set	59.95
BW-5005037	AD-9 Purge Valve Maintenance Kit	28.95
BW-K022105	Purge Valve Assembly AD-IP	79.95
TDA-R950014	Purge Valve Kit - Meritor	42.95
TDA-R955107794X	Reman AD-9 Cartridge	20.95
ABP-N82-7318	18" Wiper Blade	4.95
ABP-N82-7320	20" Wiper Blade	4.95
ABP-N82-7322	22" Wiper Blade	4.95
ANTI	Straight Green Anti-Freeze - Gallons	7.95
022-01087	Document Holder	6.95

PARTS PICTURES ARE FOR REFERENCE ONLY. ACTUAL PARTS MAY VARY. Prices good through January 31, 2011

PARTS SPECIAL



seats 



LEGACY SILVER

SET-178900MW-XX

- Fully reclining highback.
- 22" Cushion, 4-Position Seat.
- D2 Foam Technology.
- EVC Cushion Comfort System.
- Glide-A-Lator™ Isolator.
- 7-Inch Tracks.
- Air Parallelogram Suspension
- 2-Way Air Lumbar..
- EVC Cushion Comfort System.
- Ultra-Leather — Five Colors

\$499.95

HERITAGE SILVER

SET-178800KA-XX

- Heritage Silver Highback Seats,
- 20" cushion and 2-way lumbar;
- With armrests and Glide-A-Lator,
- 15-degree reclining backrest;
- Velour Fabric — Eight Colors

\$349.95

Offers good through January 31, 2011



LONESTAR LABOR SPECIAL

SEAT INSTALLATION

**Labor is for air seat to air seat replacement only.
Ask your service advisor for further details on fixed
seat to air seat replacement.**

\$44.95

Offer good through January 31, 2011

Lonestar Truck Group MANAGERS' SPECIALS



2007 Western Star 4900, C13 Caterpillar Engine 470 hp; 13 Spd OD; Diesel; Engine Brake; Air Ride Suspension; 3.21 Ratio; 22.5 Tires; Aluminum/Steel Wheels, 404,734 Miles. (7PY757624-ABL-1) ~~\$53,500~~ **\$51,000**



2005 Freightliner M2 106, C7 Cat 210 hp; Auto-OD; Spring Susp; 26 ft Length; Lift End Gate; Roll up Door; 5.29 Ratio; 22.5 Tires; Steel Wheels; 270" WB; 19,000# Rear Axle; 8,000# Front Axle, 104,011 miles. (5HU28997-ABQ-1) ~~\$33,900~~ **\$28,900**



2007 Freightliner Century C12064ST, 70 in Mid Roof XT Sleeper; 14.0 Detroit Engine 500 hp; 10 Spd OD; Engine Brake; Air Ride Suspension; 3.42 Ratio; 22.5 Tires; All Aluminum Wheels; 230" WB; 463,150 Miles. (7LV75234-BRY-1) **\$46,500**



2006 Freightliner Conventional, Mercedes MBE 4000 Engine, 10 Spd., Engine Brake, Airride, 208" WB, 22.5 Tires, All Aluminum Wheels, Air Brakes, Wet Kit, 470,505 Miles. (6DW93202-FAR-1) **\$38,500**



2000 Western Star 4964EX, 70" Hi-Rise Sleeper; 10 Spd OD; Engine Brake; Air Ride Suspension; 24.5 Tires; Aluminum Outside Wheels; 260" WB; Tandem Axle, 1,003,000 Miles. (YK960301-SAN-1) **\$16,950**



2006 Freightliner Columbia 120, Detroit Diesel DDC 14.0, 455 HP, 10 Spd., Exhaust Brake, Air Ride Suspension, 240" Wheelbase, 22.5 LP Tires, All Aluminum Wheels, 540,213 Miles. (6LV49831-SHV-1) **\$31,500**



1999 Western Star 4900EX, 3406 Caterpillar Engine 550 hp; 13 Spd OD; Engine Brake; Air Ride Suspension; 24.5 Tires; All Aluminum Wheels; 260" Wheelbase; Tandem Axle. (XK959182-TEM-1) **\$18,500**



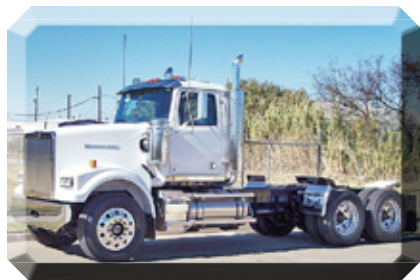
2005 Peterbilt 379. Caterpillar C15, 475 HP, 18 Spd., Exhaust Brake, Air Ride Suspension, 270" Wheelbase, 24.5 LP Tires, All Aluminum Wheels, 853,210 Miles. (5N853206-TXK-1) **\$42,500**



2004 Freightliner CL12064ST Columbia 120, Detroit Diesel DDC 14.0, 500 HP, 10 Spd, Exhaust Brake, Airride Suspension, 230" Wheelbase, 22.5 LP Tires, all Aluminum Wheels, 840,213 Miles. (4LM99487-TYL-1) **\$24,500**



2003 International 4200, (Qty: 2) DIESEL International Engine 215 HP; Diesel; Automatic; 4 Spring Suspension; All Steel Wheels; 10,000 lb Front Axle Weight; 19,000 lb Rear Axle Weight, 230,000 Miles. (3N574954-WAC-1) **\$10,500**



2011 Western Star 4900FA, Detroit DD15, 505 HP, 10 Spd, Engine Brake, Air Ride Suspension, 220 WB, 24.5 Tires, All Aluminum Wheels, Air Brakes, (BPBA5719-WFF-1) **\$118,910**



1998 Fontaine Flat Bed, 48' x 96", Airride Suspension - Hardwood Floor, 22.5 LP Tires. (W1579661-SAN-TRL-1A) **\$8,250**

Lonestar Truck Group is your place for quality used trucks.



2006 Freightliner FLD12064, MBE4000 Mercedes Engine 450 hp; 10 Spd OD; Engine Brake; Air Ride Suspension; 3.73 Ratio; 22.5 Tires; Aluminum/Steel Wheels; 206 in Wheelbase, 485,734 miles. (6DW47449-ABL-2)



2006 Freightliner CC13264 Coronado, 70" Raised Roof Sleeper; DDC 14.0 Detroit Engine 500 hp; 10 Spd OD; Engine Brake; Air Ride; 3.58 Ratio; 22.5 LP Tires; Aluminum Wheels; 260 in Wheelbase, 721,816 miles. (6PV72525-ABL-3) **\$37,500**



2011 Freightliner CA12564SLP Cascadia, 72" Double Deck Condo; DD15 Detroit 505 HP; 1,295 mi; 10 Spd OD; Eng-Brake; Airride; 3.42 R; 22.5 Tires; Alum. Wheels; 240" WB; 13,300# Front; 40,000# Rear, Zero Miles (BSAZ8623-ABQ-2)



2006 Freightliner FLD13264T - Classic XL, 70 in Double Bunk; C15 Caterpillar Engine 435 hp; 13 Spd OD; Engine Brake; Air Ride Suspension; 3.55 Ratio; 22.5 Tires; All Aluminum Wheels; 260" WB, 423,713 Miles. (6DU26198-ABQ-3) **\$ 39,900**



2005 Peterbilt 379, 63" Mid Roof Sleeper; Diesel Caterpillar Engine, 475 hp; Diesel; 13 Spd; Engine Brake; Air Leaf Suspension; All Aluminum Wheels, 628,000 Miles. (5D837526-BRY-2)



2006 Peterbilt 385, Caterpillar C15, 475 HP, 10 Spd, Engine Brake, Air Ride Suspension, 225 Wheel Base, 22.5 LP Tires, Aluminum Front Wheels, Steel Rear Wheels, 513,343 Miles. (6N855618-BRY-3)



2011 Freightliner Coronado, Detroit Diesel DD15, 475 HP, 10 SPD, Engine Brake, Tuff Trac Suspension, 227 Wheelbase, Air Brakes, Tire Size 24.5, Dual Locking Differentials, Aluminum Outers, Zero Miles. (BDAW9999-FAR-2)



2011 Western Star 4900SA, Detroit Diesel DD13, 450 HP, Tuff Trac Suspension, 220" Wheelbase, 24.5 Tires, Aluminum Front Wheels, Steel Rear Wheels, Zero Miles. (BPAZ8428-FAR-3)



2000 International 4000 Series, International 444 Engine, 210 HP, Allison Transmission, Spring Suspension, 22.5 LP Tires, Steel Wheels, Air Brakes, 199,816 Miles. (YH281083-SAN-2)



2006 Transcraft Drop Deck, 53" x 102", Airride Suspension, 11R22.5 Tires, Tool Box, Winches. (61080548-SAN-TRL-3)



2005 Freightliner FLD12064SD, 14.0L Detroit Engine 515 HP; 10 Spd OD; Diesel; Engine Brake; 4 Bag Air Ride Suspension; 4.33 Ratio; 11R 24.5 Tires; Aluminum/Steel Wheels; 220 in Wheelbase; Tandem Axle, 245,321 Miles. (5DU81605-SHV-2)



2005 Kenworth T800, Caterpillar C15, 435 HP, 10 Spd., Exhaust Brake, Air Ride Suspension, 228" Wheelbase, 22.5 LP Tires, All Aluminum Wheels, 654,023 Miles. (5F096173-SHV-3)

See a complete inventory of new and used trucks and trailers online at: www.LonestarTruckGroup.com

Many models & colors to choose from.



2005 Freightliner CL11264ST Columbia 112, 14 Detroit Engine 430 HP; 10 Spd OD; Diesel; Engine Brake; Air Ride Suspension; 3:70 Ratio; 22.5 Tires; All Steel Wheels; 171 in Wheelbase; Tandem Axle; 364,000 Miles. (LU11416-TEM-2)



2006 Freightliner CL12064S Columbia 120, Detroit Engine 430 HP; 10 Spd OD; Diesel; Engine Brake; Air Ride Suspension; 22.5 Tires; All Steel Wheels, 313,000 Miles. (6LW72163-TEM-3)



2005 Kenworth T800, C15 Caterpillar Engine 435 hp; 10 Spd OD; Diesel; Engine Brake; Air Ride Suspension; 3.36 Ratio; 22.5LP Tires; All Aluminum Wheels; 228 in Wheelbase; Tandem Axle; 552,754 Miles. (5F096181-TXK-2)



2006 Peterbilt 379EXHD, C15 Caterpillar 550 hp; 10 Spd OD; Eng-Brake; Chalmers Susp; 3.91 Ratio; 11R 24.5 Tires; Alum/Steel Wheels; 230 in Wheelbase; 12,000 lb Front Axle Wt; 46,000 lb Rear Axle Wt, 342,123 Miles. (6D899528-TXK-3)



2004 International 4300, Standard Cab; DT466 International Engine 215 hp; 6 Spd; 4 Spring Suspension; 24 ft Length x 102 in Width; 11R 22.5 Tires; All Steel Wheels; 254" Wheelbase; Single Axle; 175,260 Miles. (4H672065-TYL-2)



2005 Freightliner CL12064ST Columbia 120, 70 in Mid Roof XT Sleeper; 14.0L Detroit Engine 515 hp; 10 Spd OD; Engine Brake; 4 Bag Air Ride Suspension; 3.73 Ratio; 24.5 Tires; Aluminum Outers; 237" WB; 711,212 Miles. (5LU01696-TYL-3)



2007 Freightliner CST12064ST Century, 70" Hi-Style Sleeper; DIESEL Detroit Engine 500 hp; Diesel; 10 Spd; Engine Brake; Air Ride Suspension; All Aluminum Wheels, 558,000 (7LX66131-WAC-2) **\$42,500**



2007 Freightliner CST12064ST Century 120, 70 in Raised Roof Condo; DDE 14.0L Detroit Engine 500 hp; Diesel; 10 Spd OD; Engine Brake; Air Ride; 3.42 Ratio; 22.5 LP Tires; All Aluminum Wheels; 230 in WB; 503,000 Miles. (7PX83749-WAC-3)



2006 International 9900, Cummins ISX 435, 13 Spd, 260" Wheel Base, Engine Brake, Air Ride Suspension 22.5 Tires, All Aluminum Wheels, Air Brakes, 572,816 Miles. (6C212234-WFF-2)



2007 International 9900, Cummins ISX, 435 HP, 13 Spd, Engine Brake, Airride Suspension, 260" Wheel Base, 22.5 Tires, All Aluminum Wheels, Air Brakes, 599,330 Miles. (7C398278-WFF-3)



2009 Manac Flat Bed, 48' x 102", Spread Axle, Outside Aluminum Wheels, Cargo Hands, "Chain Ties", Galvanized Steel Cross Members, Zero Down financing with approved Credit. (9K010503-SHV-TRL-4) **\$24,500 Includes F.E.T.**



1995 Lufkin End Dump, 38' x 96", Tarp Installed. Ready to Work Today. (S1120365-TEM-TRL-4) **\$10,650**

5424 RUFÉ SNOW DRIVE
SUITE 502
N RICHLAND HILLS TX 76180

PRESORT STANDARD
U S POSTAGE
PAID
GLOBAL MAIL

RETURN SERVICE REQUESTED



**Your one-stop source
for truck and trailer
sales, parts and service.**

www.LonestarTruckGroup.com

LS-1220 InGear Newsletter, ©Lonestar Truck Group, January 2011



Daimler Truck Financial

Financing that works for you.



Lonestar Truck Group dealerships are certified dealers for Freightliner and Western Star trucks.

The Lonestar Truck Group has new 2011 Freightliner models Cascadia, Coronado, SD, M2-106 and M2-112 and new 2011 Western Star models 4900, 4900 FA and 4900SA in stock and ready for immediate delivery. If we don't have what you need we can custom order for you.

Contact any Lonestar dealer today!

Finance your Freightliner or Western Star trucks with Daimler Truck Finance now located in their new home office in Texas. They know trucks and are only in business to support Freightliner and Western Star trucks.

**www.LonestarTruckGroup.com
for a complete listing of our inventory**